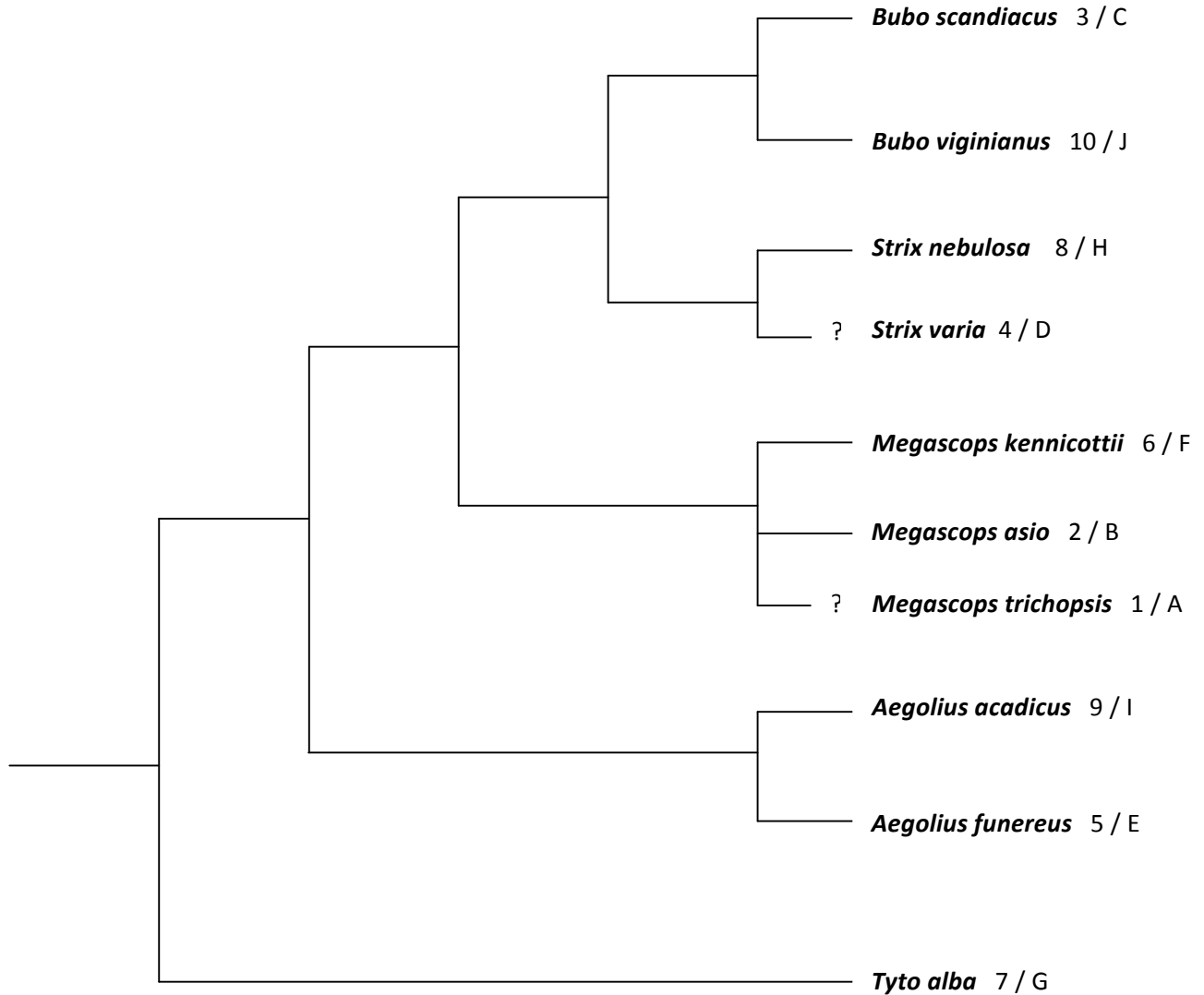


Owl Phylogenetic Tree

(based on sketch by S. Stockwell)

Numbers refer to call codes and letters refer to morphology codes in the *Owls in Trees* student exercise.

Branches marked “?” are species not included in Wink et al. 2009. Position is inferred by genus name.



From Wink et al 2009. Molecular phylogeny of owls (Strigiformes) inferred from DNA sequences of the mitochondrial cytochrome b and nuclear RAG-1 gene. *Ardea* 97(4): 581